

SPLINTING

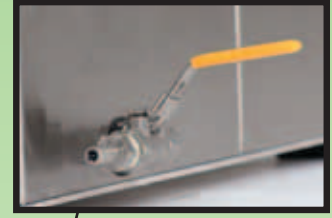
FORMA-SPLINT THERMAL BATH

Forma-Splints feature—

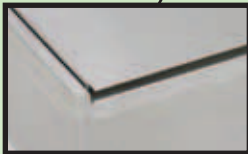
- Even **Temperature Control**
- Heavy Duty **Construction**
- Overheating **Safety Sensor**



Spacious Interior
accommodates larger
splinting materials



Reliable **ball valve
drain** makes drainage
of water easy



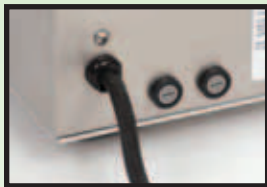
New **stainless steel rim**
for added durability



Non-slip rubber feet
protect countertop surfaces



Digital thermometer precisely
monitors temperature



External fuse assembly for
easy access and replacement



Double, half-access lid*
facilitates easy removal of
materials and prevents heat loss

*-SLD option for 1501 only

NEW!

WaterBath facilitates the largest head and neck splints



SPLINTING

Forma-Splint Splint Pans



The Forma-Splint product line incorporates the most full-featured splint pan in the industry. With a newly upgraded stainless steel rim for enhanced longevity, both models continue to offer the simplicity and functionality that professionals have experienced for years.



Amenities such as an overheating safety sensor, digital thermometer, and ball valve drain for easy cleanup make Whitehall® thermoplastic splint pans the most professional choice. Units maintain precise temperatures, giving the administrator full control of the various types of thermoplastic.



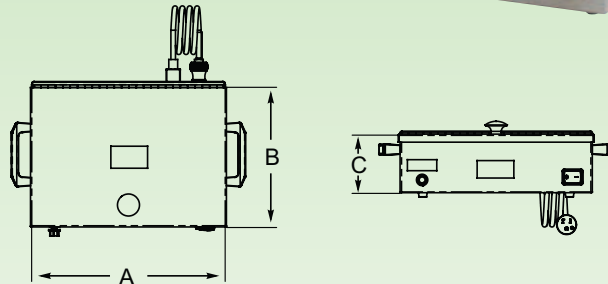
The Little Splint is the first of its kind. Its durable stainless steel construction and extremely fast heat-up time make it the only ultra-portable splint pan capable of meeting the most demanding routines.

Model

splint pan	LS-1
A - overall length - in (mm)	16 (406)
B - overall width - in (mm)	10-1/2 (267)
C - overall height - in (mm)	5-3/16 (132)
interior length - in (mm)	13 (330)
interior width - in (mm)	9-1/2 (241)
interior height - in (mm)	2-1/5 (56)

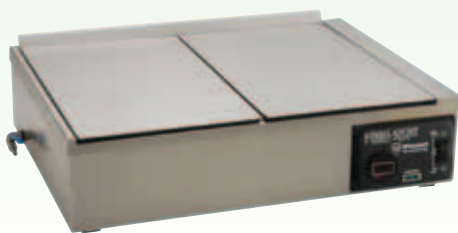
- Manufactured from recycled materials. 
- Certified per US & Canada Medical Standards; UL 60601-1 & CSA C22.2 No. 601.1 

Model LS-1 Little Splint splint pan



Splint Pan Models SP-1501 & SP-1502

Model SP-1501



The spacious stainless steel interior of the **SP-1501** accommodates splinting sheets up to 24" x 18" (61 cm x 46 cm). The hinged stainless steel split-lid is functionally designed to open completely or to one side with just one hand, leaving the other hand free. This unique design allows handy access to just half the pan when preparing smaller sheets. This model features dual thermostatic controls regulated by a high/low switch. The thermostats can be individually adjusted to conform to particular requirements. Dual independent heating elements for both settings provide quick warmup and automatically convert to a more efficient circuit once working temperature is reached.



SPLINTING

Splint Pan Models SP-1501 & SP-1502

A compact design makes the **SP-1502** universally ideal for clinical use, accommodating sheets up to 19" x 11" (48 cm x 28 cm). The variable temperature thermostat maintains water at a user-adjustable temperature between 150°F and 190°F (66°C to 88°C).



Model SP-1502



Model SP-1501-SLD

Model SP-1501 with slider lids

The -SLD option provides access to Forma-Splint's spacious interior by using a sliding door instead of the standard flip-open lid. This is especially useful in avoiding clearance issues when the unit is placed in a space-saving location.



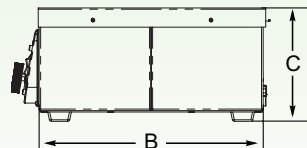
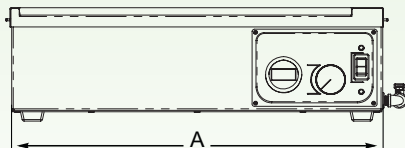
NEW!

Model SP-1600 Water Bath

The newest addition to Whitehall proven line of splinting pans, the SP-1600 series water bath is capable of handling the largest head and shoulder splints in the industry. The SP-1600-A has a manually adjusted thermostat and the SP-1600-D digital model delivers precise temperatures within +/- 1 degree.

Models

splint pan	SP-1502	SP-1501	SP-1501-SLD with slider lid	SP-1600-A	SP-1600-D
A - overall length - in (mm)	23-1/2 (600)	28-1/2 (720)	28-1/2 (720)	33 (838)	33 (838)
B - overall width - in (mm)	14-1/4 (360)	21 (530)	21 (530)	26 (660)	26 (660)
C - overall height - in (mm)	7 (180)	7 (180)	7 (180)	8 (203)	8 (203)
interior length - in (mm)	19-1/2 (500)	24-1/2 (620)	24-1/2 (620)	26 (660)	26 (660)
interior width - in (mm)	11-7/8 (180)	18-1/2 (470)	18-1/2 (470)	22 (559)	22 (559)
interior height - in (mm)	4-1/2 (110)	5 (130)	5 (130)	5 (130)	5 (130)



- Manufactured from recycled materials.
- Certified per US & Canada Medical Standards; UL 60601-1 & CSA C22.2 No. 601.1
- Certified per European Standards; IEC 60601-1