

Location: _____

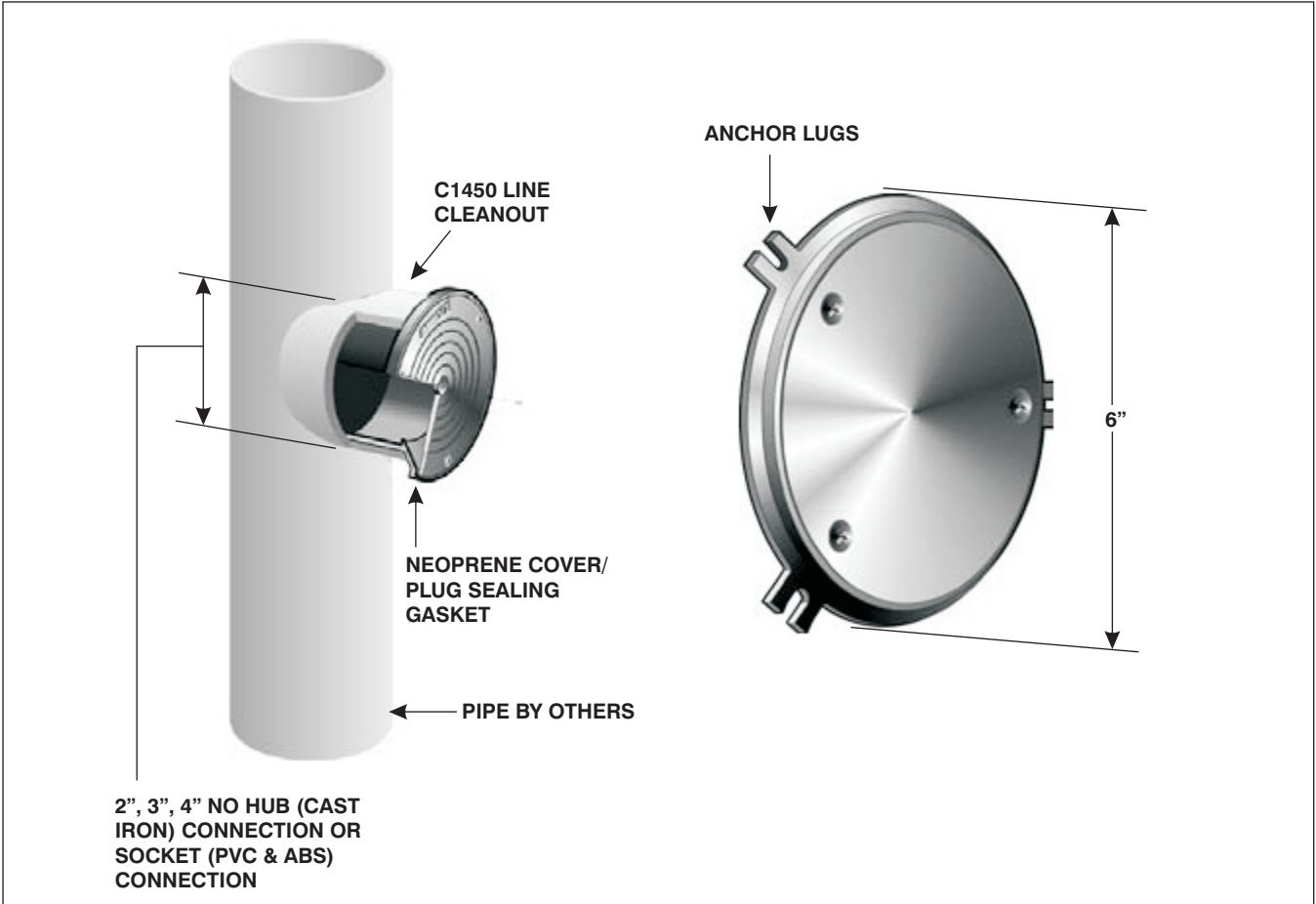


C1450-R

LINE CLEANOUT WITH ROUND, NICKEL BRONZE WALL ACCESS PANEL

Specification: MIFAB Series C1450-R (select model number with body material type) line cleanout plug with blind tapping and 6" round, smooth nickel bronze access panel with allen key screws and anchor frame with mounting lugs.

Function: Typically installed flush into walls during wall construction to cover and access cleanout plugs installed in the drainage pipe. The round access panel design eliminates the need to align with adjacent floor and ceiling patterns. Anchor tabs provide a means to secure cover to wall structure.



2", 3", 4" NO HUB (CAST IRON) CONNECTION OR SOCKET (PVC & ABS) CONNECTION

MODEL NUMBER	PIPE SIZE	COVER SIZE
C1452-R6-1	2" (51)	6" (152)
C1453-R6-1	3" (76)	6" (152)
C1454-R6-1	4" (102)	6" (152)

C1450-R Series meets ANSI/ASME floor drain standard A112.6.3-2001

- SUFFIX OPTIONAL VARIATIONS:**
- 6 Security screws (TR25 Torx & pin)
 - 30 PVC socket connection body and ductile iron cover
 - 31 ABS socket connection body and ductile iron cover
 - 50 Ductile iron cover and cast iron body
 - 95 Client logo
 - ARRA ARRA (Stimulus Act) compliant product
 - BA Buy American Act compliant product
 - PA Pennsylvania Steel Act compliant product

Job Name: _____	Page No: _____
Section No: _____	Contractor: _____
Schedule No: _____	Purchase Order No: _____

MIFAB reserves the right to make changes in material and design without formal notice and obligation.