

# Model S1320

Combination Station, Plastic Bowl  
Eye/Face Wash and Showerhead



## SPECIFICATIONS:

Model S1320 is a pedestal mounted combination station with an eye/face wash, with a plastic bowl, ABS plastic eye/face wash spray heads, an inline strainer and a stay-open 1/2" ball valve with a push handle and a shower with a plastic showerhead and a 1" stay-open ball valve with a pull rod.

## STANDARD EQUIPMENT:

**Showerhead:** Yellow, ABS plastic 7-3/8" diameter showerhead with a 20 gpm flow regulator. An anti-microbial agent is molded into the ABS material, providing integrated protection.

**Shower Valve:** 1" NPT rough chrome plated brass stay-open ball valve. Unit is provided with a stainless steel actuator arm and a 29" stainless steel pull rod.

**Eye/Face Wash Bowl:** Yellow, ABS plastic 11-3/4" diameter bowl.

**Spray Head Assembly:** ABS yellow plastic eye/face wash heads with integral flip dust covers, internal flow controls and filters to remove debris from the water. An anti-microbial agent is molded into the ABS material, providing integrated protection.

**Eye/Face Wash Valve:** 1/2" NPT chrome plated brass stay-open ball valve with a stainless steel push handle and a 50 mesh inline strainer.

**Water Supply:** 1-1/4" NPT female threaded side or top inlet.

**Waste:** 1-1/4" NPT female outlet.

**Piping & Mounting:** Schedule 40 galvanized steel piping and a 9-1/8" diameter cast iron floor flange with a yellow powder coated finish.

**Universal Sign:** ANSI compliant, vertical identification sign.

**Weekly Test Tag:** A water proof test card to record the date and inspector's name for weekly functional testing of the unit.

Model: S1320



## OPTIONAL ACCESSORIES:

*Additional costs may be incurred*

- AL1 Electric alarm with light and horn
- AL2 Electric alarm with flashing light and horn
- BF Barrier free, handicap accessible
- FLW1 Flow switch, single pole
- FPV Freeze protection valve (eye/face wash only)
- HFC Hand foot control
- MC1 Modesty curtain for horizontal showers
- MS1 MAP (magnetically actuated proximity) switch, for one (1) actuator
- MS2 MAP (magnetically actuated proximity) switches, for two (2) actuators
- PCP Polished chrome plated pipe
- SDC Stainless steel dust covers
- SPV Scald protection valve (eye/face wash only)
- SV1 Stainless steel 1" ball valve
- SV2 Stainless steel 1/2" ball valve
- TMV33 Thermostatic mixing valve is ASSE Listed per the ASSE 1071 standard. The tepid output water complies with ANSI Z358.1 standard.
- "1" Auxiliary hand-held drench hose with a self-closing valve (Use model S1321)



Member of  
U.S. Green  
Building Council

Acorn Safety assumes no responsibility for use of void or suspended data. © Copyright 2010 Acorn Safety, City of Industry, CA, A Division of Acorn Engineering Company. Please visit [www.maxsupply.com](http://www.maxsupply.com) for most current specifications.

Submittal # **S1320**  
[CMB] Rev. C 9/15/10

Product carries the following certifications:



Test rating conditions are compliant to ANSI Z358.1-2009



MaxSupply

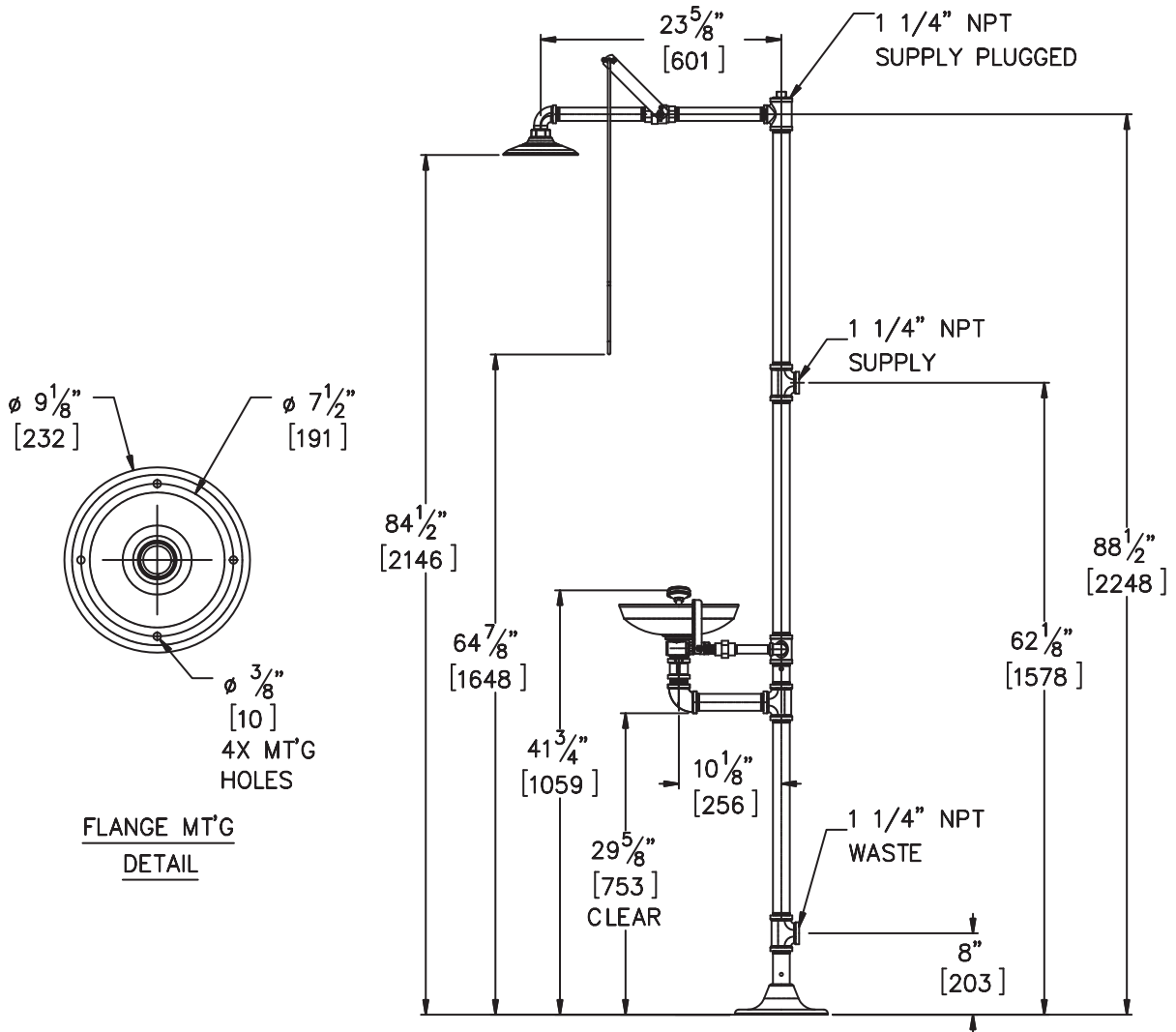
Fax: 1-888-828-6021  
Website: [www.MaxSupply.com](http://www.MaxSupply.com)  
Email: [sales@maxsupply.com](mailto:sales@maxsupply.com)



# TECHNICAL DIMENSIONS

All dimensions are nominal and subject to manufacturer's change without notice. Acorn Safety assumes no responsibility for use of void or suspended data. Dimensions may change with the addition of optional accessories. © 2008 Acorn Safety, a Division of Acorn Engineering Company. Please visit [www.acornsafety.com](http://www.acornsafety.com) for most current specifications.

**Model S1320** : Combination Station, Plastic Bowl Eye/Face Wash and Showerhead



**GENERAL NOTES:**

1. ALL DIMENSIONS ARE IN INCHES [MM].

Rough-in # **S1320** Rev. A 11/20/08

Acorn Safety warrants that its products are free from defects in material or workmanship under normal use and service for a period of one year from date of shipment. Acorn's liability under this warranty shall be discharged solely by replacement or repair of defective material, provided Acorn is notified in writing within one year from date of shipment, F.O.B. Industry, California.

SELECTION SUMMARY & APPROVAL FOR MANUFACTURING

Model Number & Options \_\_\_\_\_ Quantity \_\_\_\_\_

Company \_\_\_\_\_

Contact \_\_\_\_\_ Title \_\_\_\_\_

Signature (Approval for Manufacturing) \_\_\_\_\_ Date \_\_\_\_\_



Fax: 1-888-828-6021  
 Website: [www.MaxSupply.com](http://www.MaxSupply.com)  
 Email: [sales@maxsupply.com](mailto:sales@maxsupply.com)